

Emerald Ash Borer Look-Alikes



Emerald Ash Borer



Honeysuckle Flatheaded Borer



Honeylocust Flatheaded Borer



Flatheaded Appletree Borer



Golden Flatheaded Borer



Poplar Flatheaded Borer



Click Beetle



Dogbane Leaf Beetle



Sixspotted Tiger Beetle



Green Ground Beetle



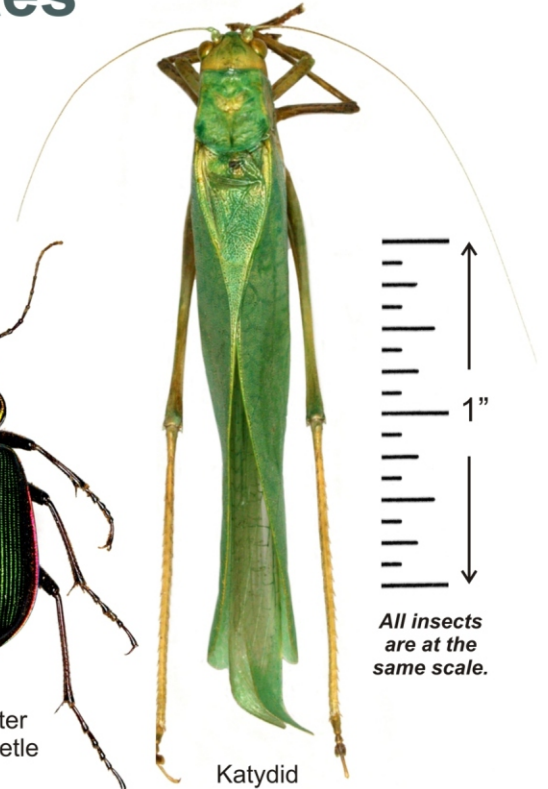
Green Ground Beetle



Blue-Green Ground Beetle

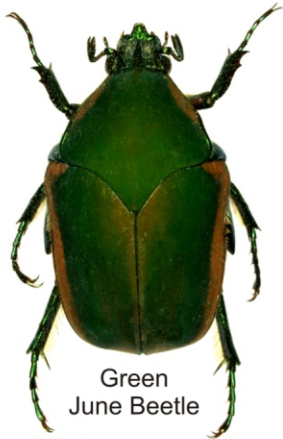


Fiery Hunter Ground Beetle



Katydid

All insects are at the same scale.



Green June Beetle



"Rainbow Scarab" Dung Beetle



Japanese Beetle



Green Stink Bug



Green Leafhopper



Green Halictid Bee



Green Bottle Fly

There are many bright metallic-green insects in Nebraska, but the emerald ash borer beetle is only a half-inch long and strictly associated with ash trees.



Produced as a cooperative effort by University of Nebraska-Lincoln Extension, Nebraska Department of Agriculture, Nebraska Forest Service, and USDA-APHIS.



University of Nebraska-Lincoln Extension educational programs abide with the non-discrimination policies of the University of Nebraska-Lincoln and the United States Department of Agriculture.