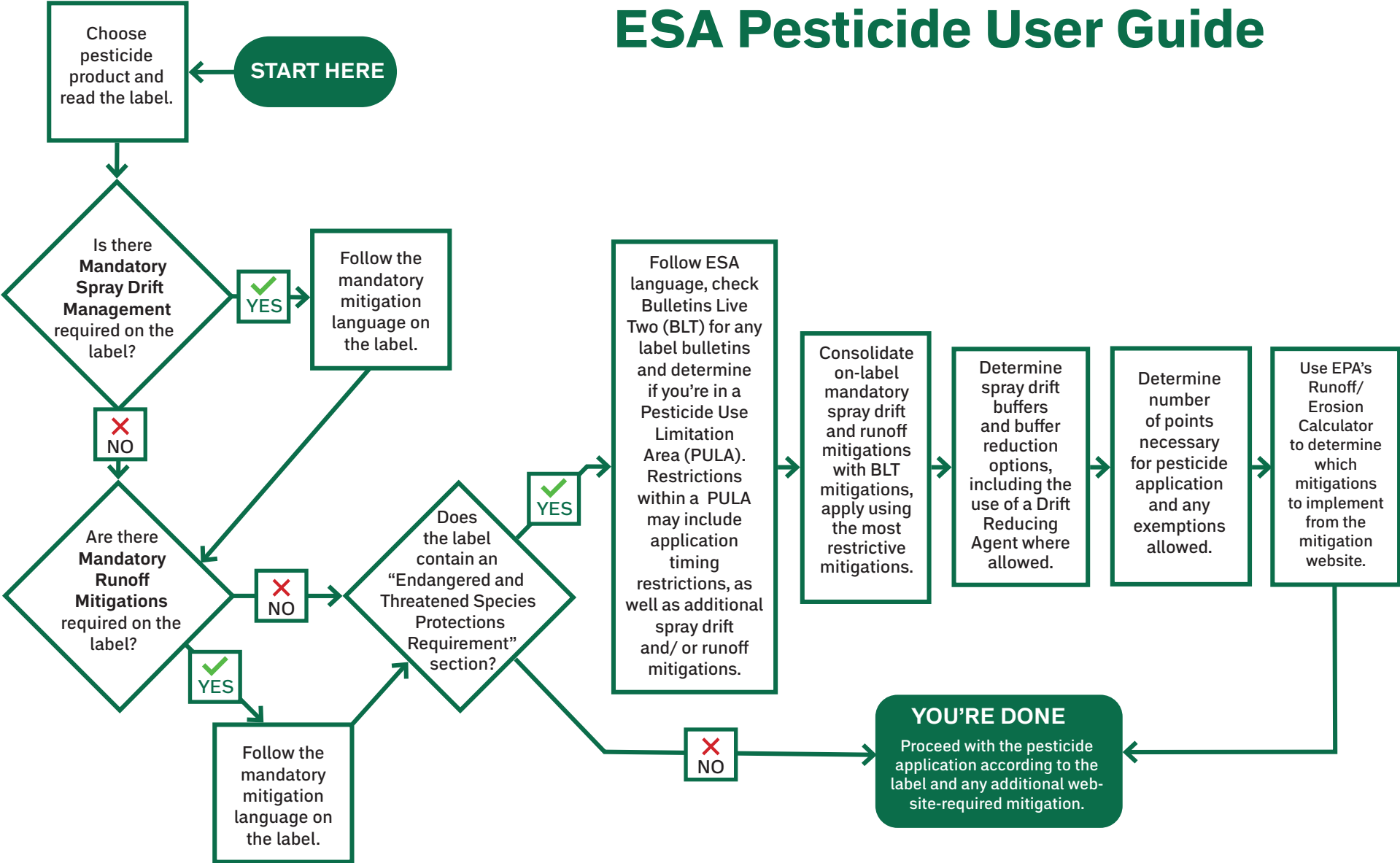


ESA Pesticide User Guide



Visit CropLifeAmerica.org/esa to learn more.





ESA Pesticide User Guide

Spray Drift

Pesticide applications may require a downwind buffer between the treated field and non-managed habitat, with the specific buffer distance listed on the product label. Buffer distances could increase in Pesticide Use Limitation Areas (PULAs) but can be reduced by following EPA-approved mitigation measures based on the application method.

Certain managed areas adjacent to treated fields, such as agricultural fields, roads, mowed grassy areas, bare ground, buildings, runoff mitigation zones, CRP lands, managed wetlands, and contained irrigation water may count toward buffer requirements. Always refer to the product label for compliance details, mandatory drift mitigations, and buffer reduction options.

Runoff

Do any of these apply to my field/application?

- Does the field slope away from the “protected” habitat?
- Is the field $\geq 1,000$ ft away from the “protected” habitat?
- Is the application an injection (soil or tree)?
- Is the pesticide chemigated under plastic mulch?
- Is the treated area $\leq 1/10$ acre ($\leq 4,356$ sq ft)?
- Does the field have a tailwater return system?
- Is there a tile-drain and controlled drainage system?
- Are berms in place at the time of application?



IF ANY OF THE ABOVE APPLY TO YOU, NO ADDITIONAL RUNOFF/EROSION MITIGATIONS ARE NECESSARY

Otherwise, to comply with the Endangered Species Act, applicators must achieve 0 to 9 mitigation points, with the exact requirement provided on the product label. These points are earned by implementing specific practices from the EPA’s Mitigation Menu (www.epa.gov/pesticides/mitigation-menu) which includes options designed to reduce environmental impacts, such as reducing the annual rate, cover crops, or vegetative filter strips. Applicators must review the label, follow mandatory mitigation requirements, and select appropriate mitigation measures to meet the required point total for legal use of the product.

Pesticide Use Limitation Areas (PULAs)

Pesticide Use Limitation Areas (PULAs) are zones with additional restrictions on pesticide use beyond what is listed on the product label. Applicators must determine if their application site falls within a PULA and follow any required mitigations, which may include avoiding use in certain areas.

The EPA communicates these restrictions through *Bulletins Live Two! (BLT)*, which provide maps of affected areas, the specific pesticide covered, required restrictions or mitigations, and the valid time period. Product labels will direct applicators to consult the relevant Bulletin for their area, which must be reviewed within 6 months before application to ensure compliance with the Endangered Species Act. To access *Bulletins Live Two!* visit www.epa.gov/endangered-species/bulletins-live-two-view-bulletins.